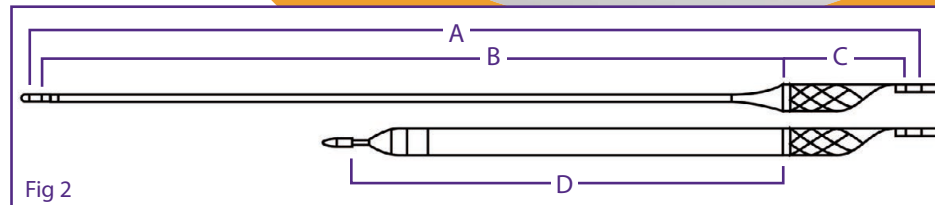
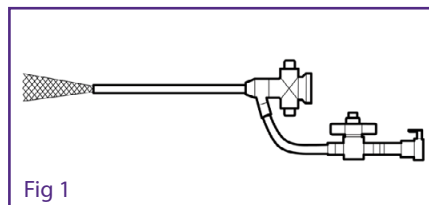


ClotTrieve[®]

TECH SPECS



Model (Fig 1)	Deployed Funnel Diameter	Sheath Inner Diameter	Guidewire Compatibility	Usable Length
ClotTrieve [®] Sheath (50-101)	14 mm	13 Fr (4.33 mm)	0.035" (0.9 mm)	15 cm

Model (Fig 2)	Guidewire Compatibility	Outer Diameter	Usable Length	Deployed Length (A)	Collapsed Collection Bag Length (B)	Coring Element Diameter	Coring Element Length (C)	Open Collection Bag Length (D)
ClotTrieve [®] Catheter (40-102)	0.035"	11 Fr (3.67 mm)	80 cm	31 cm	24 cm	16 mm	45 mm	19 cm

Indications: The ClotTrieve[®] system is indicated for (1) the non-surgical removal of soft emboli and thrombi from blood vessels, and (2) Injection, infusion and/or aspiration of contrast media and other fluids into or from a blood vessel. The ClotTrieve[®] System is intended for use in the peripheral vasculature.

Caution: Federal (USA) law restricts this device to sale by or on the order of a physician. See Instructions for Use for complete Indications for Use, contraindications, warnings, and precautions.

Extracting Large Clots from Large Vessels without the need for Thrombolytics or ICU stay.

ClotTrieve[®]

Thrombectomy System

ClotTrievers®

What is the ClotTrievers®?

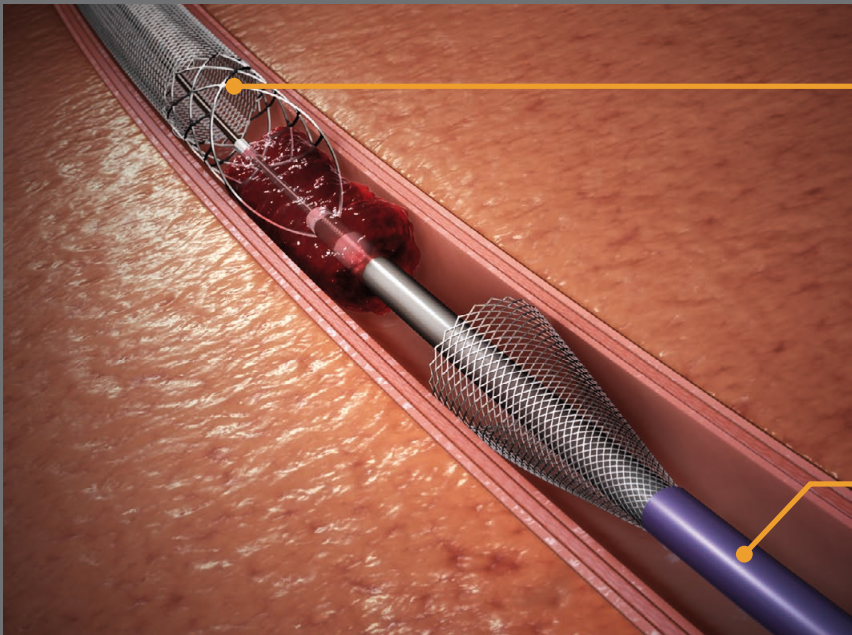
The ClotTrievers® is a mechanical thrombectomy system designed to remove large clots from large vessels in a single session, without the need for thrombolytic drugs or consequent ICU stay.

Highlights & Clinical Benefits

- ⊕ Immediate symptom improvement
- 🕒 Single session treatment
- ⚠️ Eliminates the need for thrombolytics and ICU stay
- 💗 Minimizes blood loss
- 🔑 Avoids need for capital equipment

Mechanism of Action:

The ClotTrievers® Catheter is a purely mechanical treatment option that liberates thrombus from the vessel walls and captures in a collection bag to be extracted via the ClotTrievers® Sheath.



ClotTrievers® Catheter

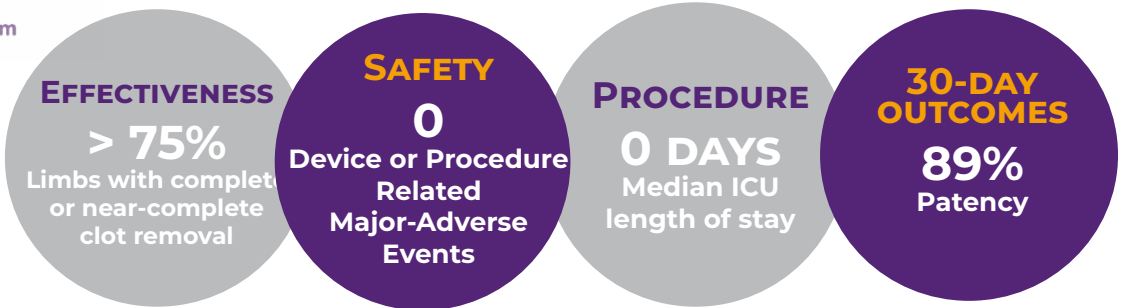
The ClotTrievers® Catheter features a nitinol coring element and a braided collection bag, designed to core and collect clot for extraction from ClotTrievers® Sheath.

ClotTrievers® Sheath

The ClotTrievers® Sheath features a self expanding nitinol mesh funnel to maximize clot removal. In addition, the sheath features a sideport for rapid aspiration and a hemostasis valve for catheter insertion.



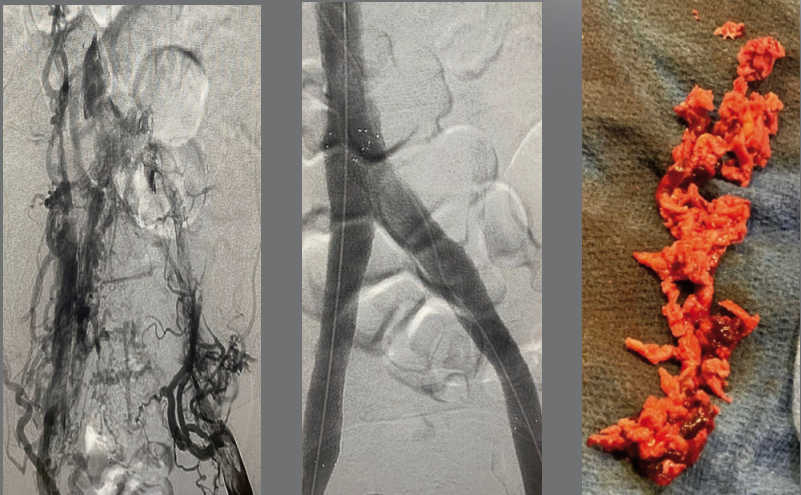
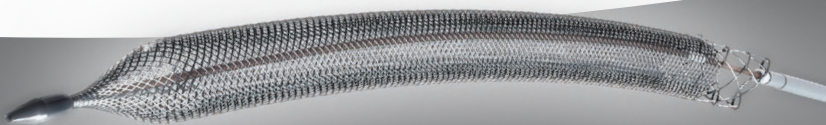
CLOUT REGISTRY



Initial CLOUT data (n = 50) demonstrates the ability of ClotTrievers to successfully treat a range of clot chronicity in real world DVT patients in a single session, without the need for thrombolytic drugs.

Measure	Baseline	30-days	Δ	p-value
Villalta score	10	3	-7	< 0.01
PTS rate	93.9%	24.2%	-69.7%	< 0.01
Moderate/Severe PTS rate	51.5%	9.1%	-42.2%	< 0.01
rVCSS	6	3	-3	< 0.01
EQ-5D QoL	0.79	0.88	0.09	< 0.01
NPRS pain	3	0	-3	< 0.01

CLOUT is a 500-patient prospective, multicenter, single-arm registry evaluating real world patient outcomes after treatment of lower extremity DVT with ClotTrievers. Three-quarters of the first 50 patients had clot older than two weeks and over half had failed other therapies before treatment. This is truly a prospective look at the “real world” DVT patient population. Nonetheless, ClotTrievers still successfully removed nearly all the clot in over three-quarters of these patients resulting in improvements to disease severity and quality of life.



What types of DVT does the ClotTrievers® treat?

Iliofemoral or Femoral-Popliteal DVT (or any vessel 6-16mm in diameter) for ClotTrievers®.

The mechanism of clot removal for ClotTrievers allows for extraction of a wide range of clot chronicity.

Venographic images before and after treatment with ClotTrievers®, and clot extracted.