

# ASAHI CHIKAI X 010

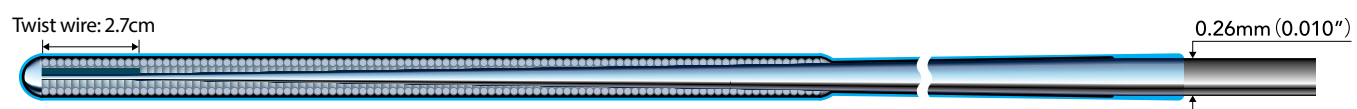
Neurovascular GuideWire

0.010"

Superior torque response in distal vessels.



## ASAHI CHIKAI X 010 (200cm)



- Tip radiopacity .....16 cm
- Polymer jacket length ..... 150 cm
- SLIP-COAT® hydrophilic coating ..... 180 cm

### Features

#### Torque Response (Flexibility)

- By enhancing flexibility, resistance from the vessel wall is reduced and superior torque response is achieved.

**Square Core**  
(ASAHI CHIKAI X 010)

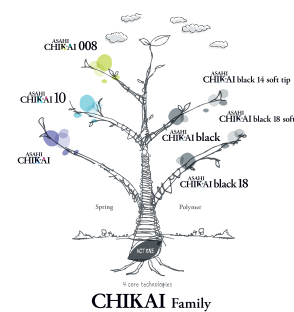


**Round Core**  
(Other ASAHI CHIKAI wires)



### Specification & ordering information

Product	Catalog No.	O.D.	Coating	Usable length	Coil length	Radiopaque length	Tip shape
<b>ASAHI CHIKAI 008</b>	WAIN-CKI-008-200	0.20 / 0.26mm (0.008 / 0.010inch)	Hydrophilic coating (SLIP-COAT®) 180cm	200cm	9cm	9cm	Straight
<b>ASAHI CHIKAI 10</b>	WAIN-CKI-10-200	0.26mm (0.010inch)	Hydrophilic coating (SLIP-COAT®) 170cm	200cm	9.5cm	3cm	Straight
	WAIN-CKI-10-300	0.26mm (0.010inch)	Hydrophilic coating (SLIP-COAT®) 170cm	300cm	9.5cm	3cm	Straight
<b>ASAHI CHIKAI X 010</b>	AIN-CKX-10-200-R	0.26mm (0.010inch)	Polymer jacket 150cm / Hydrophilic coating (SLIP-COAT®) 180cm	200cm	16cm	16cm	Re-shapeable round curve * Re-shapeable angle 25°
<b>ASAHI CHIKAI</b>	WAIN-CKI-200	0.36mm (0.014inch)	Hydrophilic coating (SLIP-COAT®) 170cm	200cm	30cm	5cm	Straight
	WAIN-CKI-200-RC	0.36mm (0.014inch)	Hydrophilic coating (SLIP-COAT®) 170cm	200cm	30cm	5cm	Round curve
	WAIN-CKI-300	0.36mm (0.014inch)	Hydrophilic coating (SLIP-COAT®) 170cm	300cm	30cm	5cm	Straight
	WAIN-CKI-300-RC	0.36mm (0.014inch)	Hydrophilic coating (SLIP-COAT®) 170cm	300cm	30cm	5cm	Round curve
<b>ASAHI CHIKAI black</b>	WAIN-CKI-200-BS	0.36mm (0.014inch)	Polymer jacket 150cm / Hydrophilic coating (SLIP-COAT®) 170cm	200cm	30cm	3cm	Round curve
	WAIN-CKI-200-BA	0.36mm (0.014inch)	Polymer jacket 150cm / Hydrophilic coating (SLIP-COAT®) 170cm	200cm	30cm	3cm	Angled 90°
<b>ASAHI CHIKAI black 14 soft tip</b>	AIN-CKI-200-B-SFT	0.36mm (0.014inch)	Polymer jacket 150cm / Hydrophilic coating (SLIP-COAT®) 170cm	200cm	30cm	3cm	Round curve
<b>ASAHI CHIKAI black 18</b>	WAIN-CKI-18-200-BS	0.45 / 0.36mm (0.018 / 0.014inch)	Polymer jacket 150cm / Hydrophilic coating (SLIP-COAT®) 170cm	200cm	34cm	5cm	Round curve
<b>ASAHI CHIKAI black 18 soft tip</b>	AIN-CKI-18-200-SFT	0.45 / 0.36mm (0.018 / 0.014inch)	Polymer jacket 150cm / Hydrophilic coating (SLIP-COAT®) 170cm	200cm	34cm	5cm	Round curve



CE 0344

Not all shapes and sizes are available in all markets. Please check availability with your sales representative. Coated with SLIP-COAT® coating.

\*ASAHI®, CHIKAI® and ACT ONE® are trademarks or registered trademarks of ASAHI INTECC CO., LTD. in Japan and other countries.

Manufactured by:



ASAHI INTECC CO.,LTD.

3-100 Akatsuki-cho, Seto, Aichi 489-0071 Japan  
Contact phone number: +81-561-86-9101  
<http://www.asahi-intecc.com>

Distributed by:

# ASAHI CHIKAI Family

Neurovascular GuideWire

Your dreams. Woven together.  
**ASAHI INTECC**

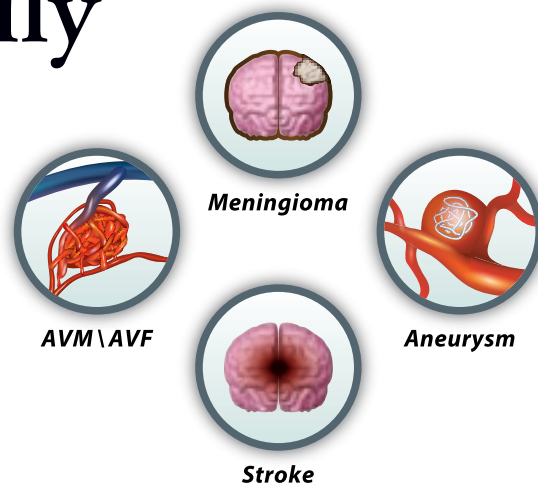


# ASAHI CHIKAI Family

Neurovascular GuideWire

Providing good torque response, support and durability for neuro interventional procedures

ASAHI CHIKAI family of guide wires has been originally developed based on Asahi Intecc's unique set of technologies which accomplished great success in the field of cardiovascular interventions.



## Technologies with Dual-coil design using ACT ONE



Employs the ASAHI brand rope coil, which provides torqueability, flexibility and resiliency.

ASAHI INTECC CO., LTD.'s unique technologies in wire drawing, wire forming, torque transmission and coating are utilized to create highly responsive guide wires featuring ASAHI's ACT ONE, dual-coil design.



### Key features

#### Precise torque response

- ACT ONE provides exceptional torque response in tortuous anatomy.

#### Durable tip-shape retention

- Incorporating with ACT ONE, re-shapable pre-shaped round curve and 90 degree angle enhance tip shape memory and durability.



Angled 90°

※ Available for CHIKAI black



Round curve

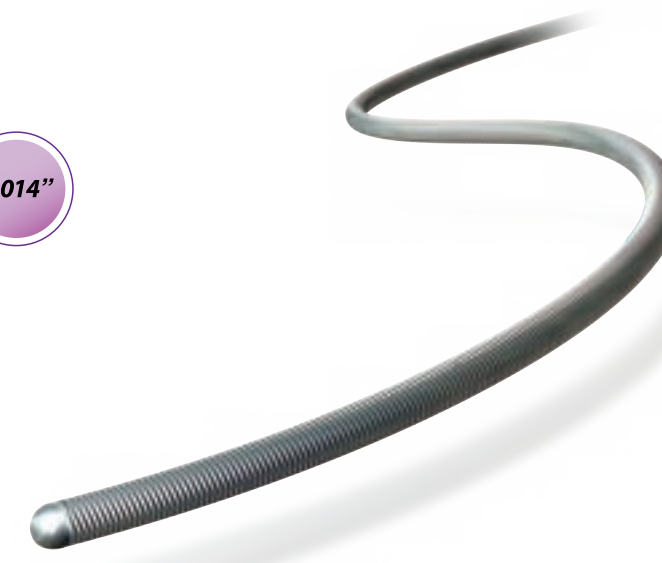
※ Available for CHIKAI, CHIKAI black, CHIKAI black 18, and CHIKAI black 14/18 soft tip

## ASAHI CHIKAI

Neurovascular GuideWire

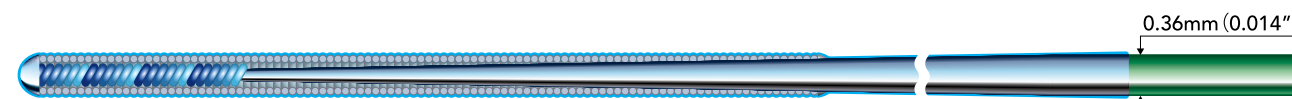


ASAHI CHIKAI, ASAHI CHIKAI 10 and ASAHI CHIKAI 008 are designed for an optimal balance between tip flexibility and microcatheter support



### ASAHI CHIKAI (200cm, 300cm)

- 0.36mm (0.014") workhorse guide wire



- Tip radiopacity ..... 5 cm
- SLIP-COAT® hydrophilic coating ..... 170 cm
- Well-balanced workhorse wire

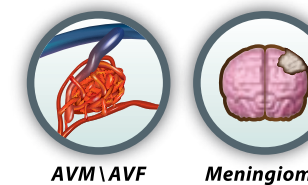


### ASAHI CHIKAI 008 (200cm)

- Soft flexible tip & distal body



- Tip radiopacity ..... 9 cm
- SLIP-COAT® hydrophilic coating ..... 180 cm
- Distal anatomy / small-sized vessels
- Compatible with microcatheters with small inner lumen

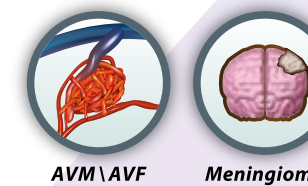


### ASAHI CHIKAI 10 (200cm, 300cm)

- Balanced tip and higher body support

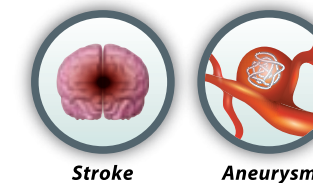


- Tip radiopacity ..... 3 cm
- SLIP-COAT® hydrophilic coating ..... 170 cm
- Mid to distal anatomy / larger-sized vessels
- Compatible with microcatheters with relatively larger inner lumen



## ASAHI CHIKAI black

Neurovascular GuideWire

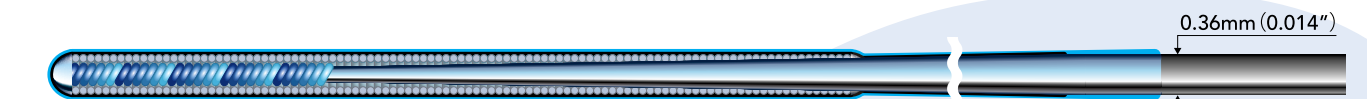


Providing excellent support and less friction due to polymer jacket and hydrophilic coating for smooth delivery of microcatheter



### ASAHI CHIKAI black (200cm)

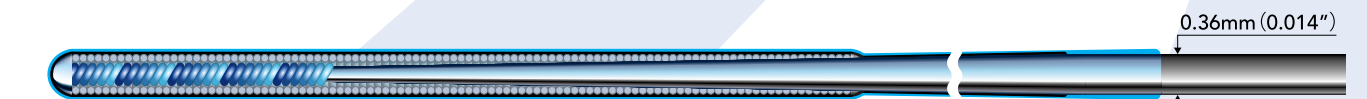
- 0.36mm (0.014") guide wire with enhanced lubricity



- Tip radiopacity ..... 3 cm
- Polymer jacket length ..... 150 cm
- SLIP-COAT® hydrophilic coating ..... 170 cm
- Complex cases and targeting distal anatomy
- Ease distal aspiration catheter placement

### ASAHI CHIKAI black 14 soft tip (200cm)

- Safe manipulation



- Tip radiopacity ..... 3 cm
- Polymer jacket length ..... 150 cm
- SLIP-COAT® hydrophilic coating ..... 170 cm
- Complex cases and targeting distal anatomy
- Ease distal aspiration catheter placement
- Softer tip enhances safety in challenging anatomies
- 43% softer tip than CHIKAI black

### ASAHI CHIKAI black 18 (200cm)

- Speciality guide wire



- Tip radiopacity ..... 5 cm
- Polymer jacket length ..... 150 cm
- SLIP-COAT® hydrophilic coating ..... 170 cm
- Enough support to deliver large ID microcatheter
- Reverse tapered shaft design to avoid ledge effect
- Ease clot retriever delivery and positioning

### ASAHI CHIKAI black 18 soft tip (200cm)

- Speciality guide wire



- Tip radiopacity ..... 5 cm
- Polymer jacket length ..... 150 cm
- SLIP-COAT® hydrophilic coating ..... 170 cm
- Enough support to deliver large ID microcatheter
- Reverse tapered shaft design to avoid ledge effect
- Ease clot retriever delivery and positioning
- 30% softer tip than CHIKAI black 18