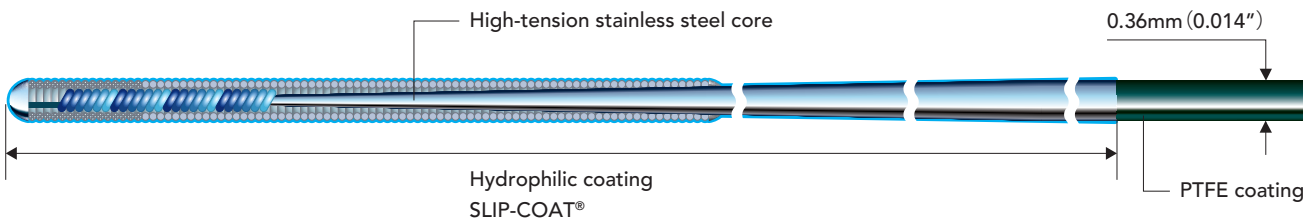


Structure & ordering information



Product	Catalog No.	Diameter	Coating	Usable length	Coil length	Radiopaque length	Tip shape	Label color	Clip color
ASAHI SUOH 03	AHW14R013S	0.36mm (0.014inch)	Hydrophilic coating (SLIP-COAT®) 52cm	190cm	19cm	3cm	Straight		
	AHW14R013P	0.36mm (0.014inch)	Hydrophilic coating (SLIP-COAT®) 52cm	190cm	19cm	3cm	Pre-shape		
	AHW14R313S	0.36mm (0.014inch)	Hydrophilic coating (SLIP-COAT®) 52cm	300cm	19cm	3cm	Straight		
	AHW14R313P	0.36mm (0.014inch)	Hydrophilic coating (SLIP-COAT®) 52cm	300cm	19cm	3cm	Pre-shape		



Coated with SLIP-COAT® coating.

© 2017 ASAHI INTECC CO., LTD.
ASAHI, *SUOH* and *SION* are trademarks or registered trademarks of ASAHI INTECC CO., LTD. in Japan and other countries.

Manufactured by:

Distributed by:



ASAHI INTECC CO.,LTD.
3-100 Akatsuki-cho, Seto, Aichi 489-0071 Japan
Contact phone number: +81-561-86-9101
<http://www.asahi-intecc.com>

ASAHI SUOH 03

PTCA GUIDE WIRE



The significance of “03”

ASAHI SUOH03 PTCA GUIDE WIRE

Evolutionary coronary guide wire from ASAHI INTECC

Softest available tip load at 0.3 gf*

Our new soft as silk guide wire provides new opportunities to treat complex PCI cases

Characteristics

0.3 gf Tip load

- Softest available tip load at 0.3 gf among ASAHI guide wires.
- Lightest market available tip load of 0.3 gf*.
- Improved shaft design allows superb trackability and crossability in severely tortuous vessels.

Flexibility and maneuverability

- ASAHI's proprietary composite core design gives highly effective torque transmission and flexibility.

Mini pre-shape tip

Mini pre-shape tips available for cases when precision is necessary. Also available with straight tips.

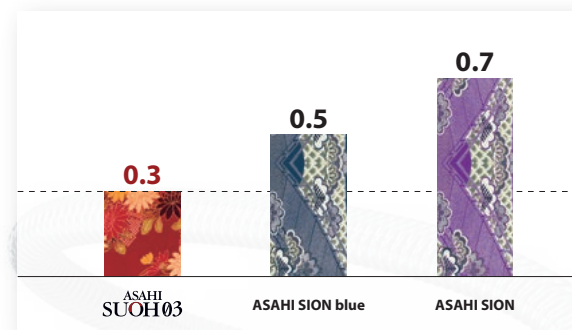


Safety tip load and flexibility



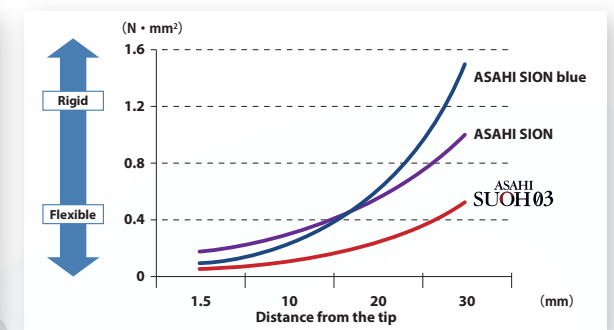
Tip load (gf)

The softest tip among ASAHI guide wires – 0.3 gf.



Tip flexibility

Radiopaque distal 30 mm is the most flexible among ASAHI guide wires.

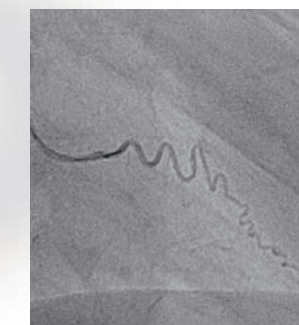


All the data were obtained by company standardized test, which may differ from industry standardized tests.
All the data do not guarantee that all devices have exactly the same performance with the samples used for tests.

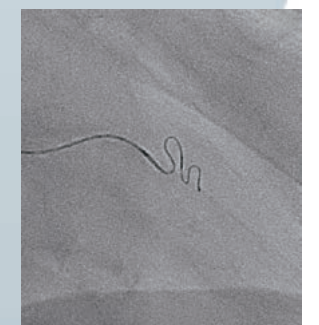
Superior tip flexibility

Flexible shaft provides superb trackability and crossability in severe tortuosity.

The long radiopaque segment provides good visualization.



Angiogram by tip injection



SUOH 03 Wiring

*Softest / Lightest available tip load at 0.3 gf is as of Jan 2017.